

ELLE DECOR

WHAT'S NEXT

ES

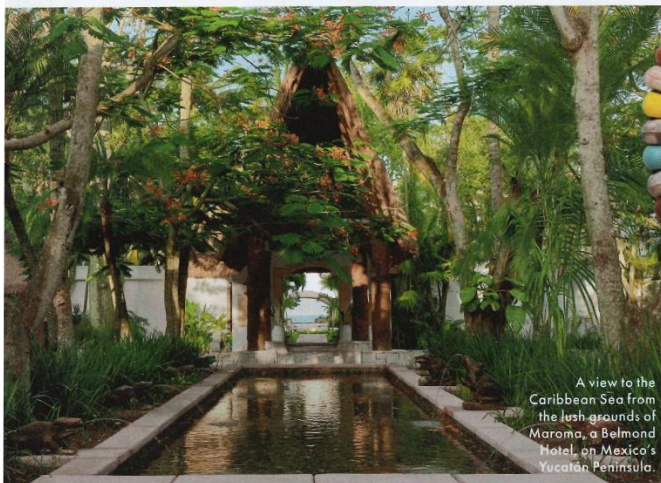
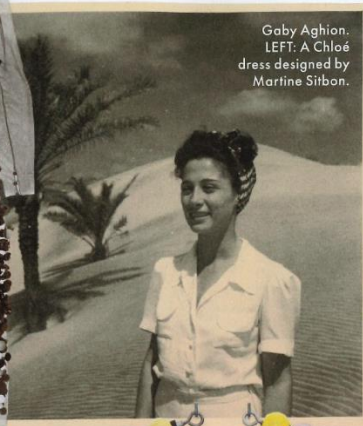
VISIT:

NEW YORK CITY

At the Jewish Museum, **Mood of the Moment: Gaby Aghion and the House of Chloé** (October 13, 2023, through February 18, 2024) is the first exhibition dedicated to the French fashion house and its founder. With spaces created by ELLE DECOR A-List designer Elliott Barnes, the show explores Aghion's craft while also highlighting the iconic designs of her successors, including Karl Lagerfeld, Martine Sitbon, and Phoebe Philo. Barnes's displays, with rooms draped in paper used for fabric conservation, are a fitting tribute to Aghion's free-flowing vision for a less restrictive postwar femininity. —Camille Okhio thejewishmuseum.org



Gaby Aghion.
LEFT: A Chloé
dress designed by
Martine Sitbon.

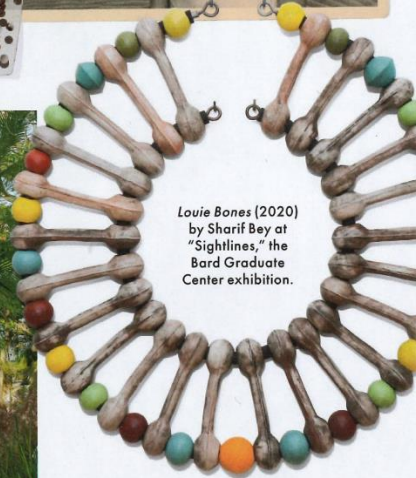


A view to the
Caribbean Sea from
the lush grounds of
Maroma, a Belmond
Hotel, on Mexico's
Yucatán Peninsula.

STAY:

RIVIERA MAYA, MEXICO

From its debut in 1995, **Maroma**, a resort on 200 acres of white-sand beachfront abutting the jungle in Mexico's Yucatán Peninsula, was ahead of its time. The founder, architect Jose Luis Moreno, lived on the property and modeled it on his own home, hiring a family of local masons to build the hotel's low-slung buildings in palm, bamboo, and Mérida stone. "It was like stepping into a private villa by the sea," says Tara Bernard, the London-based designer of the idyllic getaway. "And that is the feeling I tried to preserve." Tapped by the hotel's new owner, LVMH's Belmond, Bernard oversaw a sensitive renovation, rehiring masons for additions like a bar and a Guerlain spa. More than 80 percent of the refreshed decor was sourced in Mexico, including some 700,000 hand-painted clay tiles by José Noé Suro in Guadalajara for the guest rooms and chandeliers by Max Kublailan inspired by Mayan jade jewelry. —Ingrid Abramovitch belmond.com



Louie Bones (2020)
by Sharif Bey at
"Sightlines," the
Bard Graduate
Center exhibition.

LEARN:

NYC

For a deeply researched look at the history of African metalsmithing, don't miss **Sightlines on Peace, Power, and Prestige: Metal Arts in Africa** at the Bard Graduate Center Gallery (September 29 through December 31). Curated by Drew Thompson, the exhibition considers the relationship between historic and contemporary African metal design within a rich context supported by photography, weavings, and multimedia works. Pieces on display include 18th-century Benin Nigerian bracelets, 19th-century Ethiopian shields, and 20th-century Ghanaian Asante pendants. —C.O. bgc.bard.edu ▷

CLOCKWISE FROM TOP: JULIEN T. HAMON; RAYMOND AGHION; BRYAN CONLEY; WILLIAM JESS LAIRD