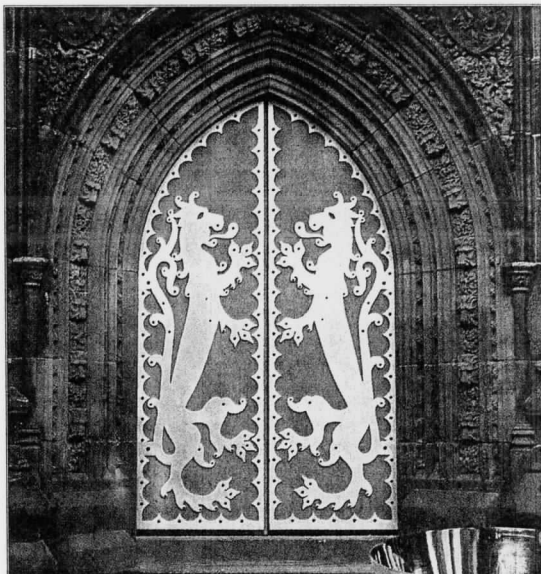
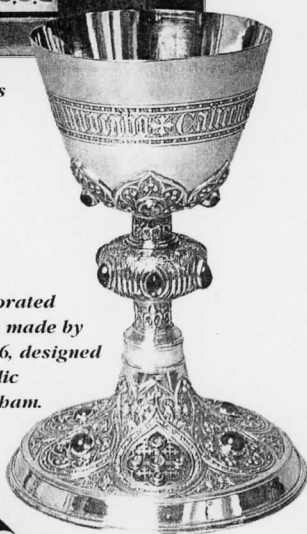


*Our Special Valentine Issue*  
**VICTORIAN**  
 DECORATING & LIFESTYLE™

FEB/MARCH 1996 \$2.95



*Ceremonial west doors, St. Giles church, Cheadle, Staffordshire, with beraldic decoration by Pugin, 1846.*



*Chalice, parcel-gilt, decorated with enamel and jewels, made by Hardman & Co., ca. 1846, designed by Pugin. Roman Catholic Archdiocese of Birmingham.*



*Bread plate, encaustic-decorated earthenware with Waste Not Want Not motif, made by Minton, ca. 1849, designed by Pugin.*

# Gothic REVIVED

A .W.N. Pugin may not be a household name in America, but he was the genius who almost singlehandedly defined the Gothic Revival movement in Victorian England. His life was short (1812-1852), yet his influence was vast. Pugin is most famous for the interiors of the Houses of Parliament, which seem to date from the Middle Ages, but were actually re-built after a fire in 1834. He was also a master designer of everything from churches, houses and monuments to textiles, stained glass, books, jewelry, wallpaper, ceramics and furniture. Working with the latest technology, he developed a colorful, highly patterned form of medievalism, perfectly suited to his own time.

A spectacular new exhibition, the first retrospective of Pugin's work to be shown in this country, opened in November. About 150 objects, large and small, showcase the style that captured the romantic spirit of the nineteenth century.



*Jardiniere designed by Pugin and made from color-printed Minton tiles, 1851. Trustees of the Victoria & Albert Museum.*

A.W.N. Pugin  
 Master of Gothic Revival  
 The Bard Graduate Center for  
 Studies in the Decorative Arts  
 18 West 86th Street  
 New York, NY 10024  
 212-501-3000  
 Until February 25, 1996

PHOTOGRAPHS COURTESY  
 THE BARD GRADUATE CENTER;  
 CHALICE AND DOORS BY  
 GRAHAM MILLER, JARDINIÈRE,  
 VICTORIA & ALBERT MUSEUM